



HODSONS



ASKING PRICE

£295,000

Ouzlewell Green

Wakefield, WF3 3QP



HODSONS

PROPERTY SUMMARY

This detached bungalow is located within a popular commuter village and is offered to the market with no onward chain.

The spacious accommodation briefly comprises, entrance hall, lounge, breakfast kitchen with range of quality shaker style units, conservatory, two bedrooms including master bedroom with fitted furniture and bathroom with modern suite. In addition there are two good size loft rooms.

The bungalow has a gas central heating system, double glazing to the window units and block paved area to the front provides ample off road parking, leading to an attached single garage.

To the rear is an enclosed and good size garden which is mostly laid to lawn.

Situated on the border of the villages of Lofthouse and Carlton in an area well regarded for the good range of quality homes on offer whilst being convenient for the cities of Wakefield and Leeds and the commuter is well served by the nearby motorway network.

2



1



2





HODSONS





HODSONS

OFFICE ADDRESS

37-39 George Street
Wakefield
West Yorkshire
WF1 1LX

OFFICE DETAILS

01924 200544
wakefield@hodsonsproperty.co.uk
www.hodsonsproperty.co.uk

LOCAL AUTHORITY

Leeds City Council

TENURE

Freehold

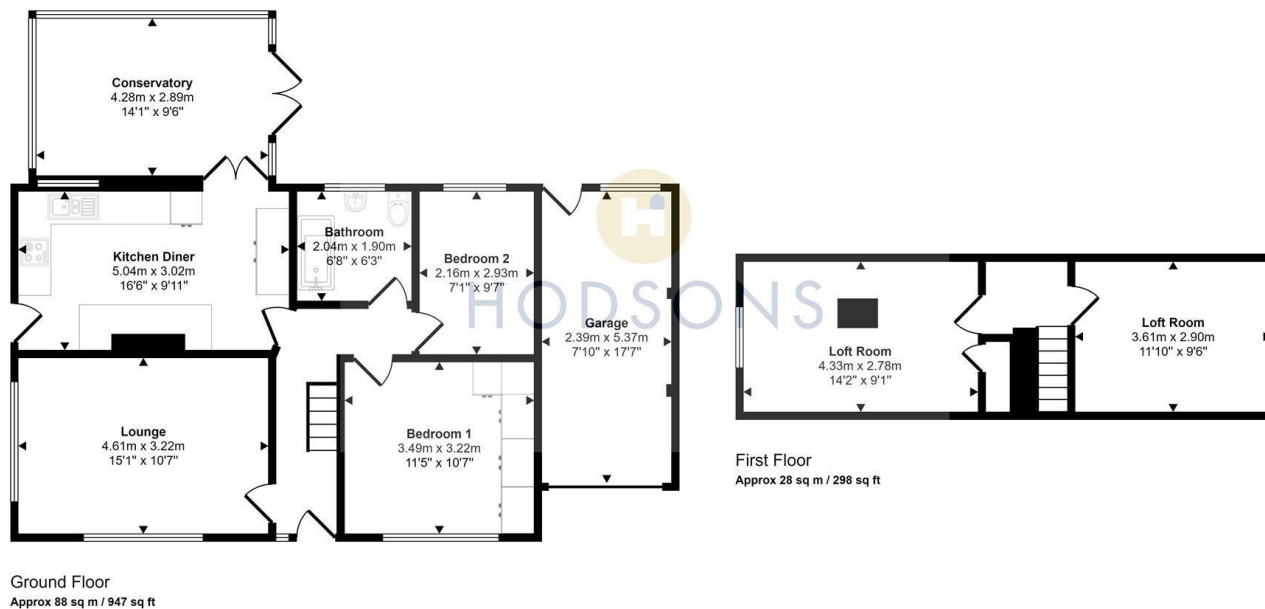
COUNCIL TAX BAND

C

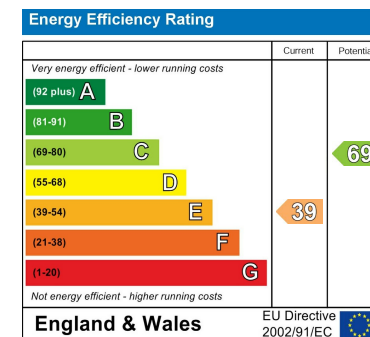
VIEWINGS

By prior appointment only

Approx Gross Internal Area
116 sq m / 1245 sq ft



This floorplan is only for illustrative purposes and is not to scale. Measurements of rooms, doors, windows, and any items are approximate and no responsibility is taken for any error, omission or mis-statement. Icons of items such as bathroom suites are representations only and may not look like the real items. Made with Made Snappy 360.



Agents Note: Whilst every care has been taken to prepare these particulars, they are for guidance purposes only. All measurements are approximate and are for general guidance purposes only and whilst every care has been taken to ensure their accuracy, they should not be relied upon and potential buyers/tenants are advised to recheck the measurements